

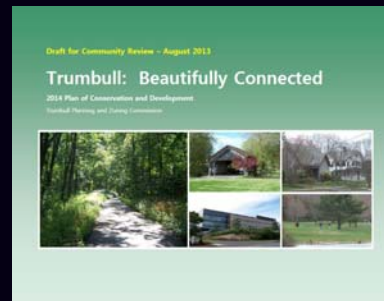
Trumbull



2014 Plan of Conservation & Development

Community Information Meeting

September 12, 2013



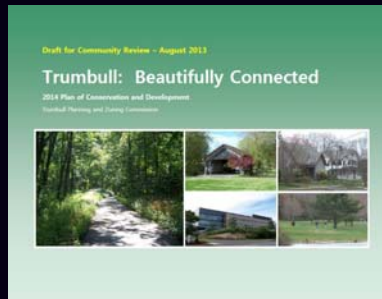
BACKGROUND



PLAN BASICS ...

A Plan of Conservation and Development (POCD) identifies strategies to guide a community in the future:

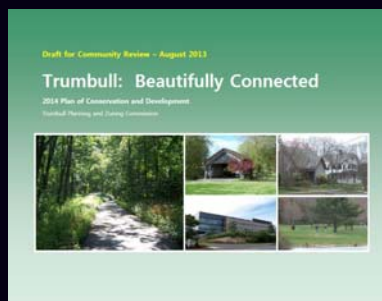
- Physical
- Social
- Economic



PLAN BASICS ...

A POCD:

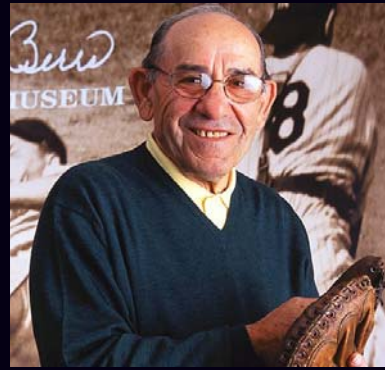
- Evaluates "where we are"
- Identifies "where we want to go"
- Shows "how we will get there"



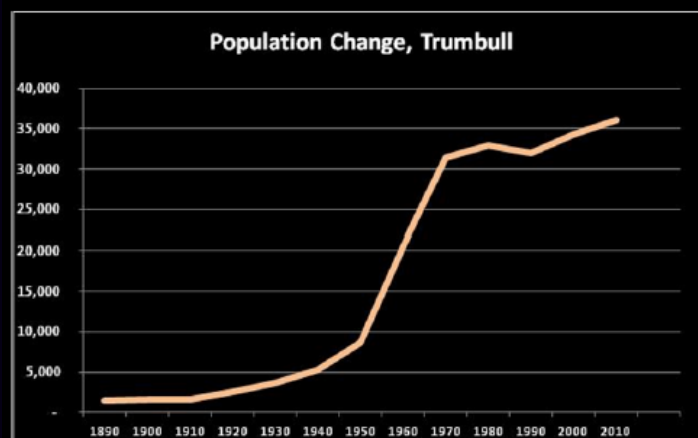
WHY PLAN?

“If you don’t know where you’re going, you’ll wind up somewhere else.”

Yogi Berra

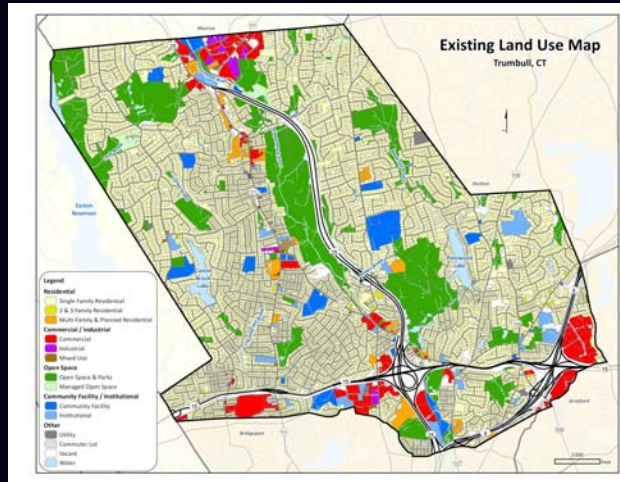


Population Growth



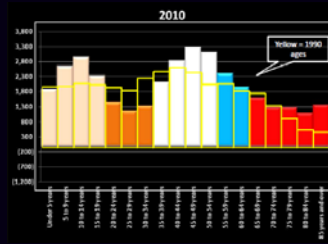
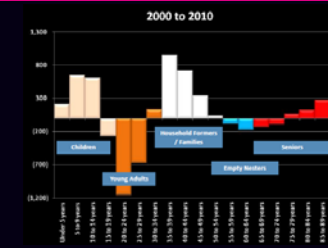
Sources: US Census

Land Use



Changing Community

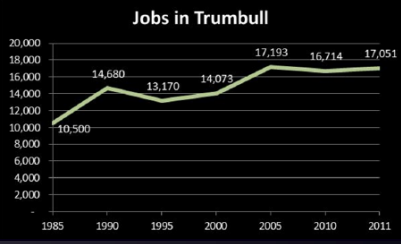
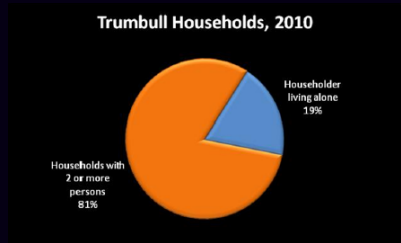
- **Net Increase =**
 - families with school age children (30 -54)
 - people aged 75+
- **Net Decrease =**
 - young adults (20-30)
 - empty nesters (55-64)
- **We are getting older ...!**
 - Baby boomers
 - Aging in place
 - "Silver Tsunami"



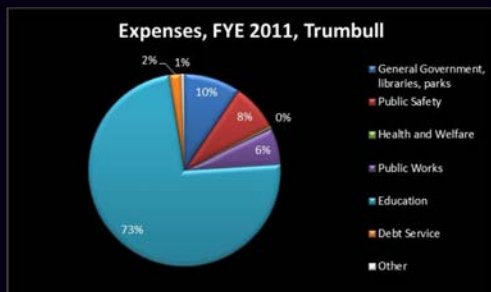
Changing Community

- 50% of housing units in 2010 were occupied by one or two people
 - Reflects current lifestyles
 - Reflects an aging population
 - People are increasingly considering other housing options

- Have become a jobs center as well as a residential community



Fiscal



	% of Revenues from Property Taxes
Easton	91%
Trumbull	87%
Fairfield	87%
Shelton	85%
Monroe	83%
Stratford	78%
Connecticut Average	82%
Bridgeport	57%

Source: Municipal Fiscal Indicators, 2006-2010, CT Office of Policy and Management.

Grand List Comparison

	% from Commercial, Industrial, Utility
Bridgeport	20%
Shelton	18%
Connecticut	17%
Stratford	17%
Trumbull	13%
Monroe	10%
Fairfield	9%
Easton	2%

Source: Municipal Fiscal Indicators, 2006-2010, CT Office of Policy and Management.

Community Input



PLAN COMPONENTS



Plan Components



Town Character



Development Patterns



Business Development



Residential Development



Natural Resources



Open Space and Parks



Community Facilities



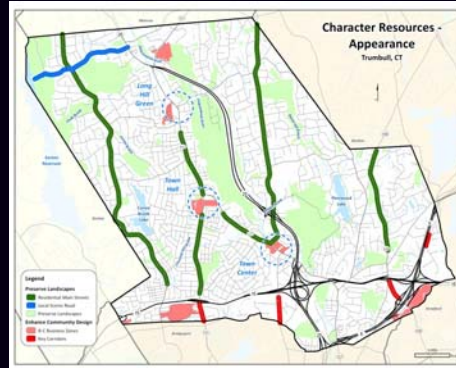
Transportation



TOWN CHARACTER

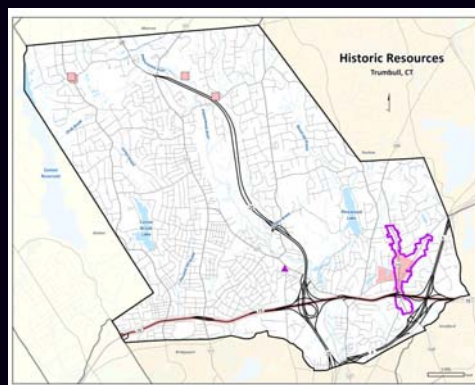
Town Character

- Promote Trumbull's image
- Maintain tree-lined, residential nature of roads
- Establish a design review process for business areas



Town Character

- Preserve and promote historic resources
- Maintain scenic roads
- Promote community spirit



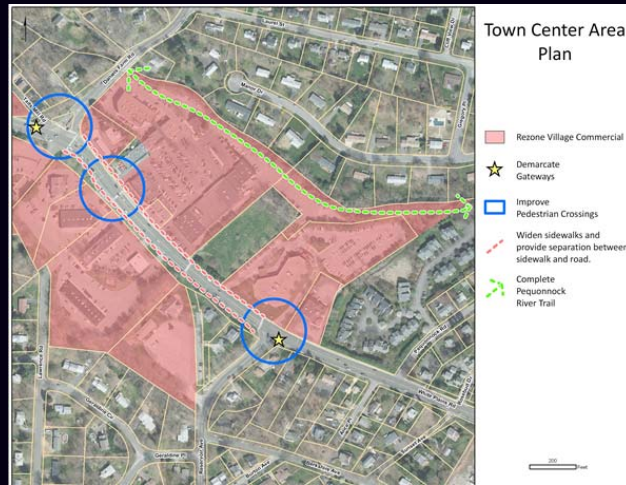


Development Patterns – Town Center

- Encourage redevelopment / enhancement of Town Center
 - Village-Style Walkable Development Patterns



Development Patterns – Town Center



Development Patterns – Town Center

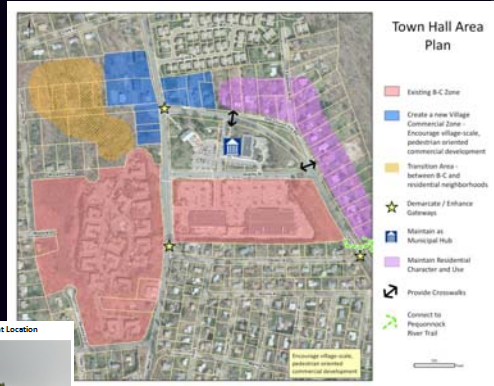


Development Patterns – Town Hall

- Encourage pedestrian-friendly village style patterns



Many residents identified a new office building near town hall as the kind of building and type of architecture to encourage in this area.



Development Patterns – Long Hill

- Encourage pedestrian-friendly village style patterns



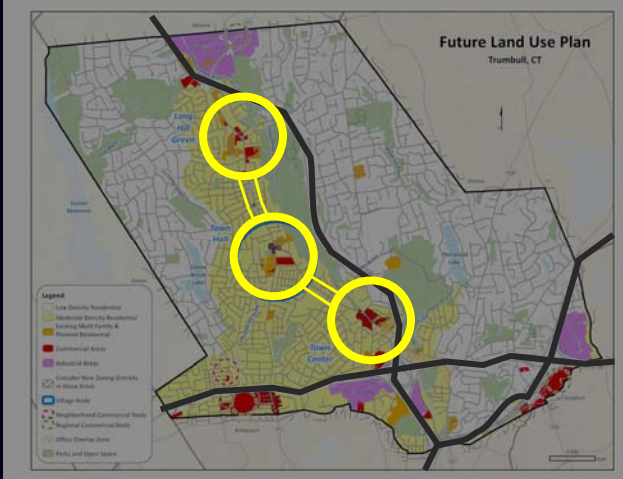
A well-maintained gateway would ensure travelers know they were entering a special "place."



Regular events and activity on the Green creates the role this area plays in the community.

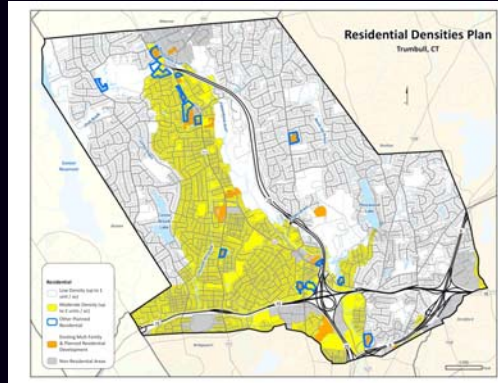


Development Patterns – Overall



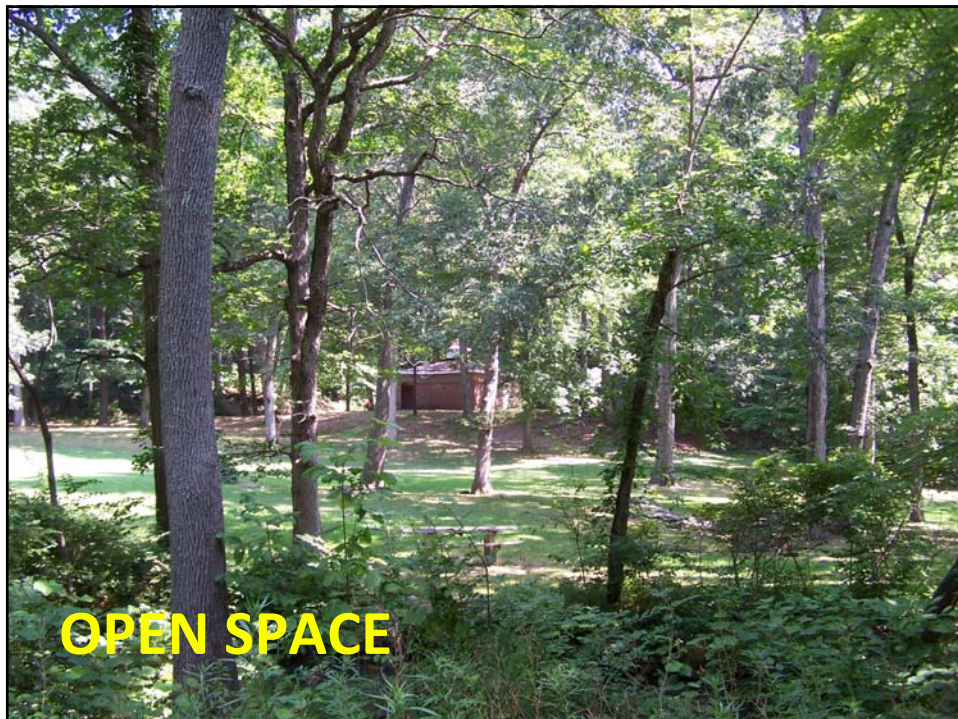
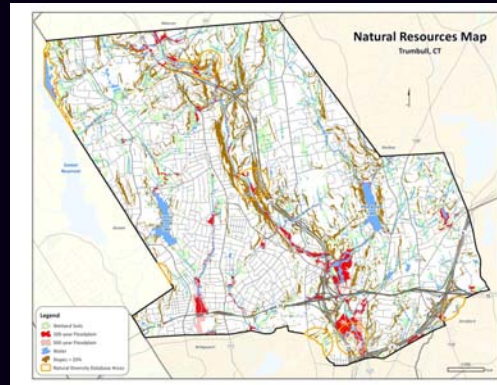
Residential Development

- Maintain residential character of Trumbull
 - Protect neighborhoods from incompatible uses / activities
- Explore ways to address housing needs in ways appropriate for Trumbull
 - Older population
 - Affordable housing units



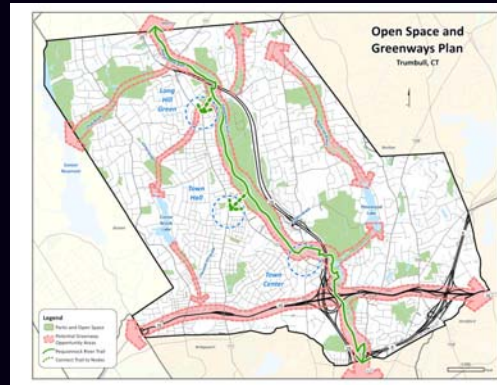
Natural Resources

- Promote stewardship
- Protect resources when development occurs
- Improve water quality / stormwater management
- Promote “green” practices
- Protect lakes, ponds, rivers
- Minimize impacts from floods / natural hazards



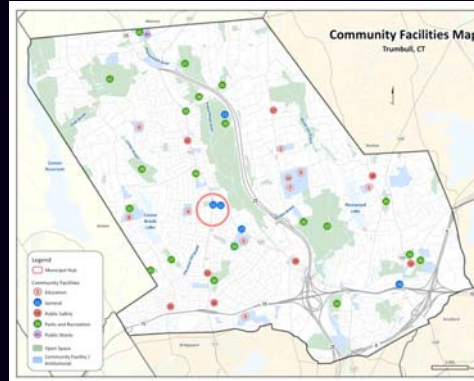
Open Space / Parks

- Support / promote the Pequonnock River Trail
- Continue strategic open space acquisitions
- Manage our open space system



Community Facilities

- **Community Facilities**
 - Encourage long-term planning for needs
- **Utility Services**
 - Ensure wastewater needs are met
 - Ensure adequate utilities are available
 - Provide a resilient / sustainable electrical system
 - Enhance wireless services

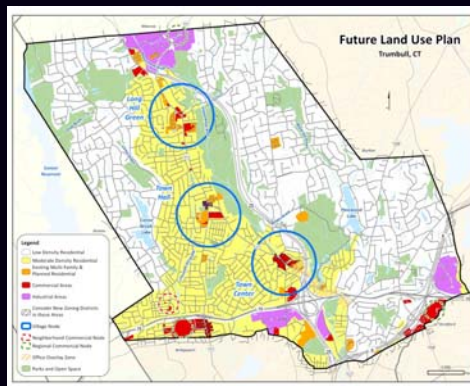


SUMMARY



Future Land Use Plan

- Protect character
- Promote mixed use and pedestrian-friendly villages
 - Village areas
 - Business parks (uses, standards)
 - Transition areas
- Address zoning
 - Village areas
 - Business parks (uses, standards)
 - Transition areas
- Explore ways to address housing needs



IMPLEMENTATION



Implementing The Plan

- Policies

- Tasks

SUMMARY FOR COMMUNITY CHARACTER (continued)	
D] Preserve and promote historic resources.	
Policies:	1. Continue to allow adaptive re-use of historic buildings and promote re-use options to eligible property owners.
Tasks:	2. Integrate education about Trumbull's history and historic resources into community events. 3. Establish new and innovative events that connect residents with Trumbull's history. 4. Install plaques at key historic sites and along the Pequonnock River Trail. 5. Adopt tax abatements for owners of historic buildings. 6. Update the adaptive re-use regulations to simplify the determination of eligibility. 7. Identify potential public uses for at-risk historic buildings located adjacent to town-owned properties. 8. Create a new committee to champion historic resource promotion and protection (or elevate the role of the Historical Review Committee to undertake this role). 9. Seek funding opportunities including becoming a Certified Local Government. 10. Determine if the designation of Local Historic Places or Districts is warranted and desirable.
E] Maintain scenic roads.	
Policies:	1. Seek to maintain and enhance the scenic aspects of local roads.
Tasks:	2. Designate additional local scenic roads.
F] Promote community spirit.	
Policies:	1. Continue to hold community events.
Tasks:	2. Establish a volunteer recognition program.

COMMUNITY FEEDBACK



Guidelines

- All comments are welcome!
- Respect the comments of others
 - Please direct comments to the Commission – not to other residents
- Be considerate – summarize your thoughts in 2-3 minutes and submit written testimony (please don't read it)
- Goal = Adjourn no later than 9:00 PM

Trumbull

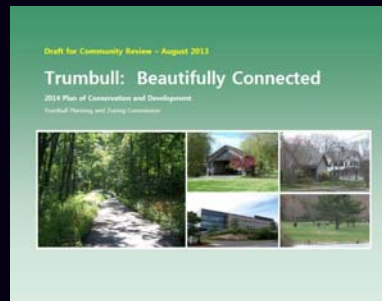


2014 Plan of Conservation & Development

Comments

Or

Questions?



Possible Next Steps

- **September** - PZC considers map/text changes to refine the POCD and address community feedback
- **October / November** – PZC reviews revised POCD and moves towards adoption
- **December** – PZC public hearing on POCD adoption
- **January 2014** – Effective date?

Trumbull



2014 Plan of Conservation & Development

**Thank You
For Your
Comments!**

